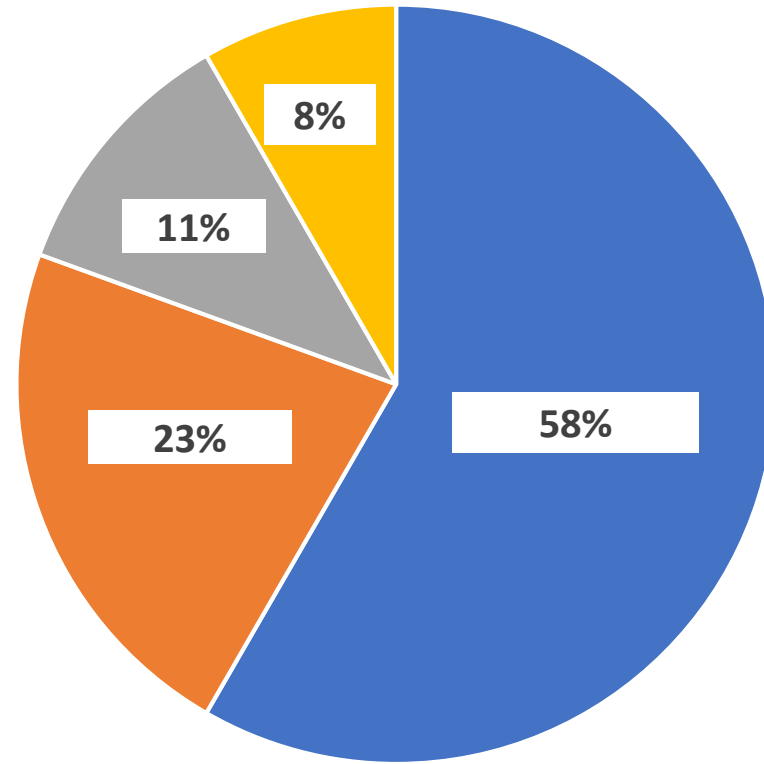




PTT Global Chemical
Public Company Limited
Terminal feed back

Delay at berth category

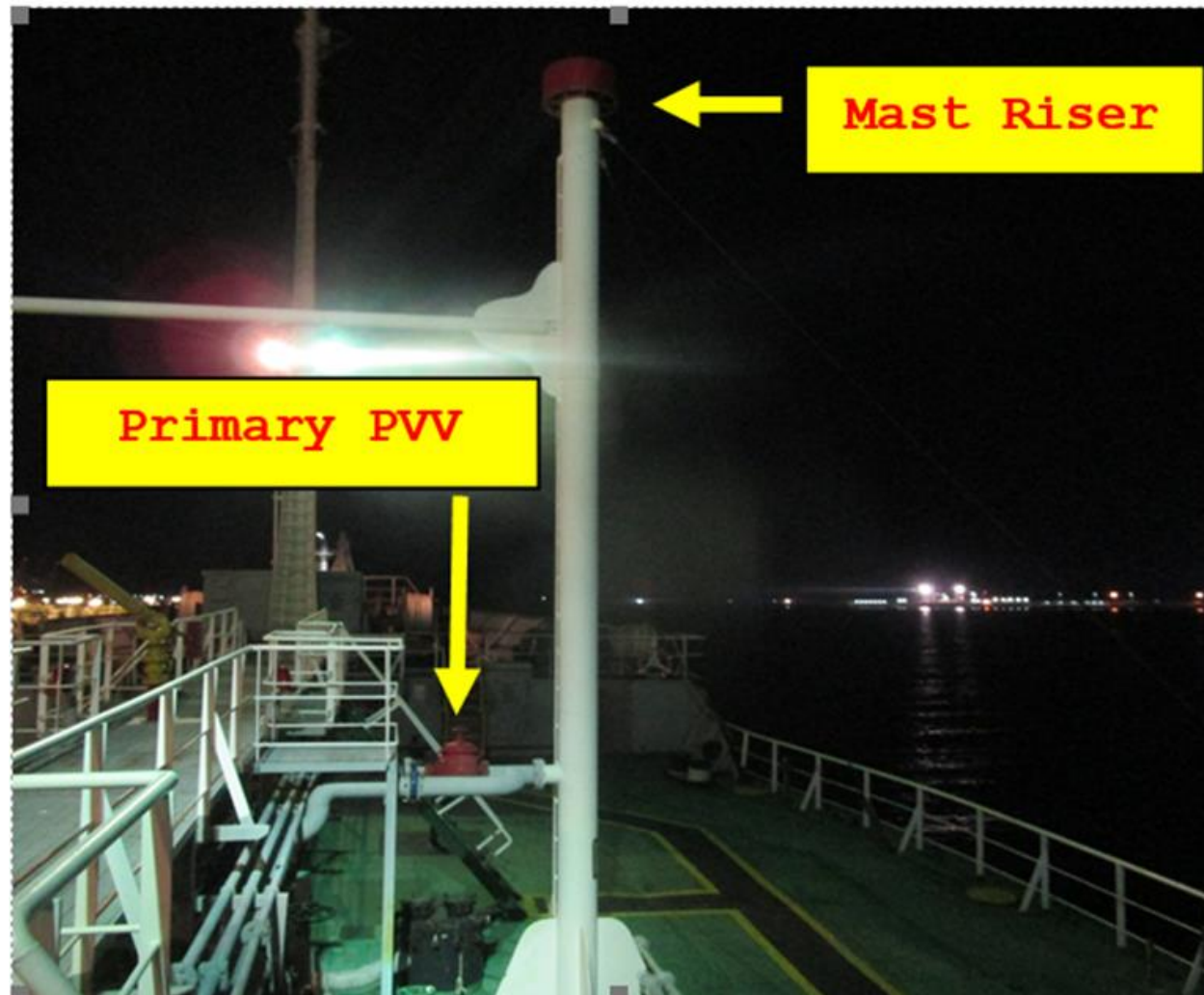
- Ship's equipment defect
- Other
- Waiting charter's instruction
- Air&Sea pollution



Delay at berth from ship's equipment defect

- Vessel suspend loading due to vapors line plug.
- Awaiting for IGS preparation before commencing to discharge.
- Discharging suspended due to cargo pumps problem.
- Ship mooring winch damaged during berthing because its hydraulic pipe broken. This condition causes that the winch cannot be operate.

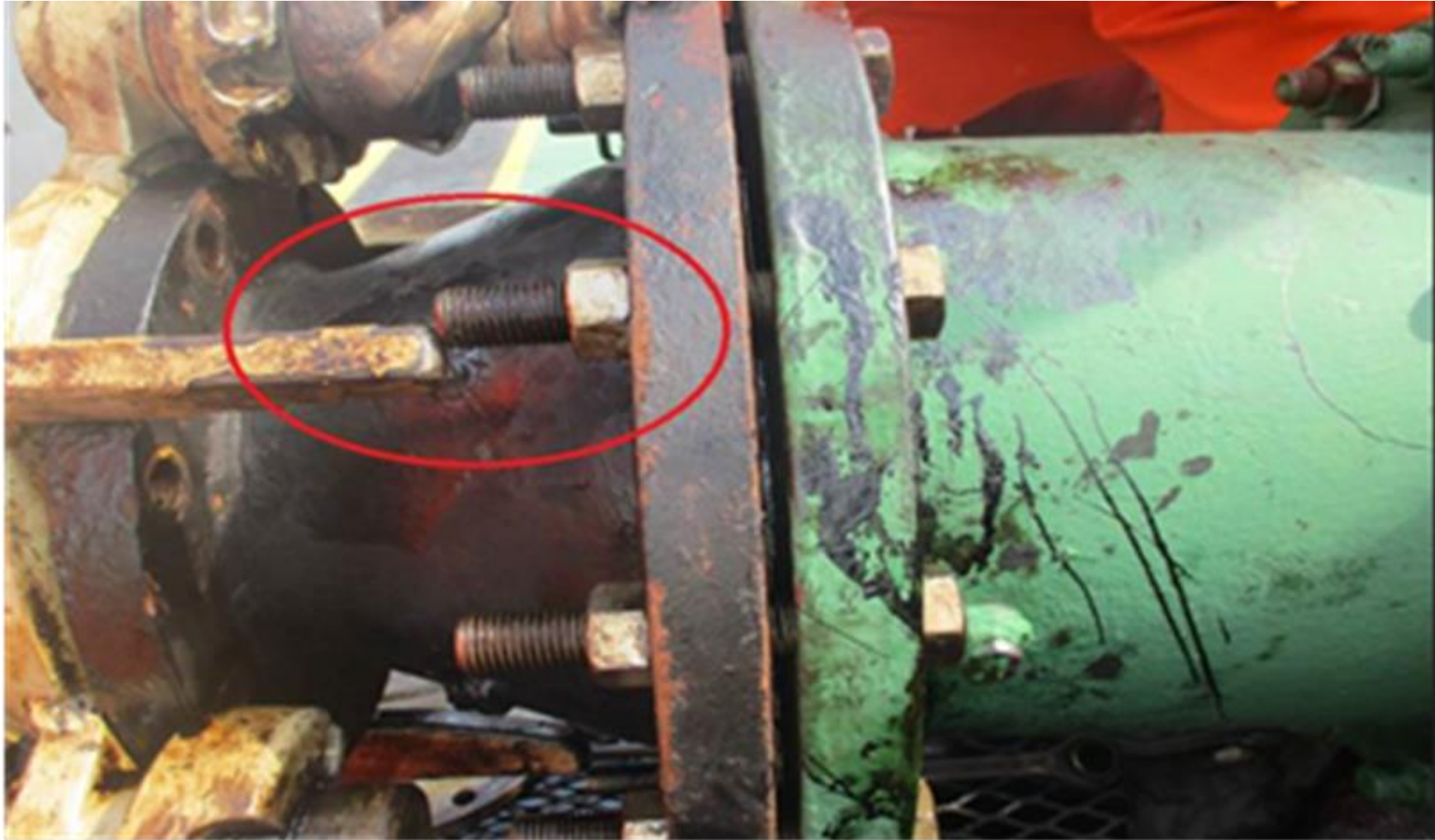
- The manual block valve to mast riser passing.
- Primary PVV passing through Mast riser, this causes terminal VOCE system did not function properly.



- Found audible of high high level alarm at 98% malfunction.
- During performing Ship/Shore safety checklist, Loading Master requested to test independent high high level alarm, We're found high high level alarm of cargo tanks No. 1P (98%) was damaged.



- Nuts and Bolts at ship's manifold obstruct to Loading arm connection



- The ship tank number 1P, 1S, 3P, 3S, 4S sight glass seal leaking.



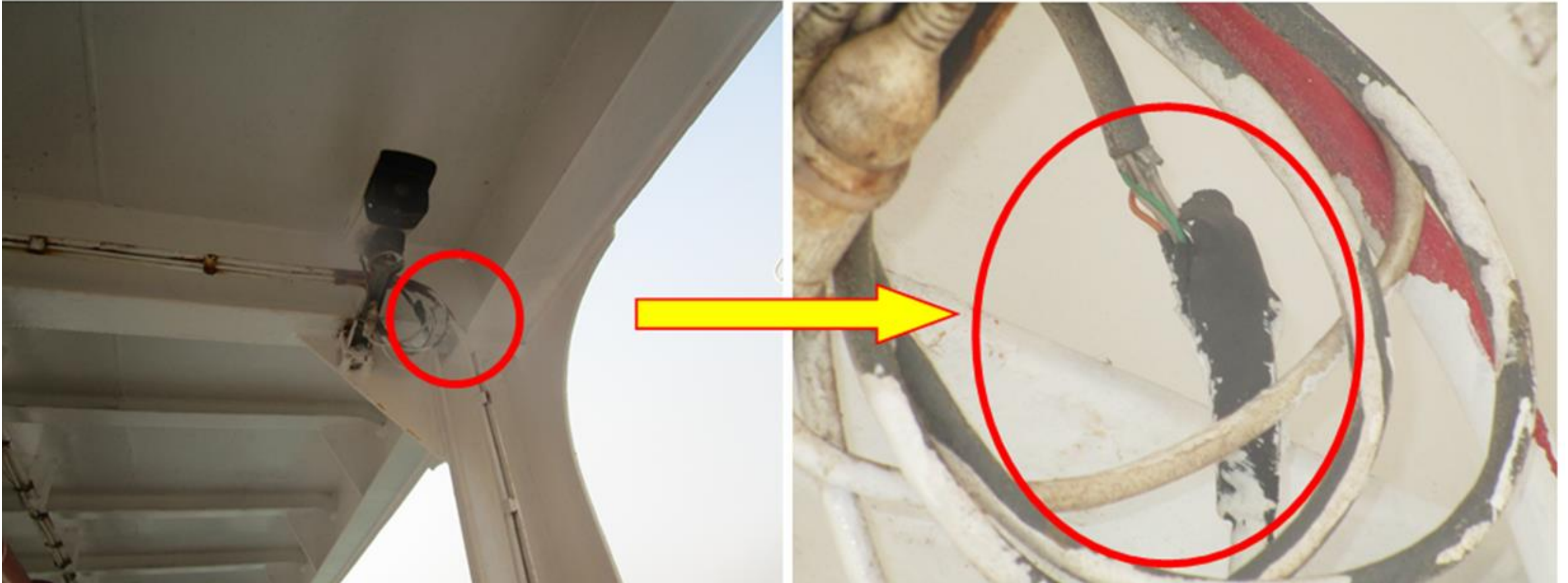
- The ship tank number 1P , 2P , 3P , 3S , 4P , 4S 's lid seal leak.



- No isolate spectacle blind at overboard discharge valve.



- Wiring of CCTVs installed outside accommodation are in poor condition.



Delay at berth from Air&Sea pollution

- Discharging operation had been suspended according to ship release excessive black smoke and bad smell from ship's funnel due to boiler problem



- Release excessive black smoke and bad smell from ship's funnel.



- Release of black soot to sea.



Delay at berth from break terminal regulation

- Terminal required vapor manifold connection size 6" but ship cannot provide reducer.
- New master onboard don't have special pilot license of Maptaphut channel but berthing terminal without government pilot in charge.



- Shore gangway obstructed by wire sling of ship's gangway

